

Note: The Mayor’s transmittal letter was written at the time that the Proposed Budget was submitted to Council. This schedule shows the amendments made to the Proposed Budget.

FY2016 OPERATING BUDGET	FY2016 Proposed Budget	Amendments	FY2016 Adopted Budget
General Fund Revenues	643,271,441	1,500,000	644,771,441
General Fund Expenditures			
City Attorney	10,279,866	(316,043)	9,963,823
City Court Clerk	7,023,693	168,383	7,192,076
City Judges	637,728	3,806	641,534
Council	1,537,329	62	1,537,391
Engineering	10,485,896	61,013	10,546,909
Executive	8,453,159	(120,875)	8,332,284
Finance	5,368,544	38,723	5,407,267
Fire	171,354,967	1,533,814	172,888,781
General Services	23,779,481	248,947	24,028,428
Grants	62,740,104	664,872	63,404,976
HCD	4,483,923	2,348	4,486,271
Human Resources	7,053,570	26,086	7,079,656
Information Systems	18,201,461	(297,633)	17,903,828
Parks & Neighborhoods	51,497,611	226,062	51,723,673
Police	251,332,522	(855,744)	250,476,778
Public Works	22,346,865	94,626	22,441,491
Total Expenditures	656,576,719	1,478,447	658,055,166
Increase (Decrease) in Net Assets	(13,305,278)	21,553	(13,283,725)
Total CIP Revenues	182,433,602	6,450,000	188,883,602
Total CIP Expenditures	182,433,602	6,450,000	188,883,602







THE CITY OF MEMPHIS, TENNESSEE

Memphis is located on the east bank of the Mississippi River in the southwest corner of Tennessee. Memphis is the State's largest city and the county seat of Shelby County. The corporate limits contain 343 square miles, representing 45 percent of the total land area of Shelby County. Memphis ranks as the 18th largest city in the nation. The 2014 population was 645,704 according to the State of Tennessee Department of Economic and Community Development.

GOVERNMENTAL STRUCTURE

The City of Memphis was incorporated as a city in 1826. Memphis operated under a commission form of government from 1909 until January 1, 1968, when a Mayor-Council form of government was established. The City Council is composed of thirteen representative citizens who are elected for four-year terms. Six council members are elected at large in multi-member districts, with territorial boundaries determined by dividing the City in half with each multi-member district consisting of three (3) council member numbered positions. The remaining seven (7) council members are elected by single member districts, numbered 1-7. The Council elects its own chairperson, exercises legislative powers, approves budgets and establishes the tax rate. The Mayor is elected to a four-year term. The Mayor carries out the policies of the City and appoints City board members, officers and division directors, with Council approval. The City's operating and service departments are organized under the Chief Administrative Officer, who is appointed by the Mayor.

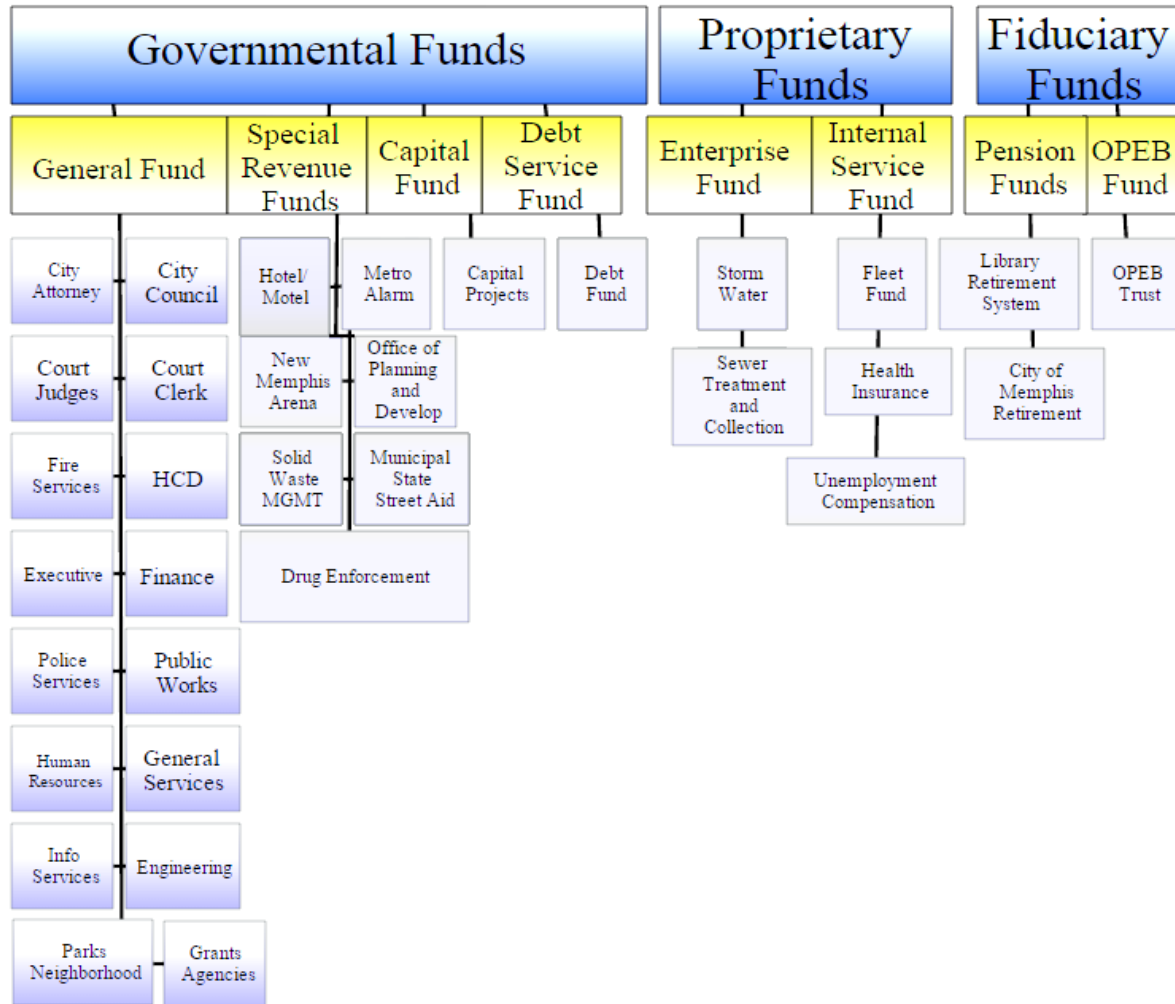
The Chief Administrative Officer, under the direction of the Mayor, coordinates the activities of all administrative divisions of City government, acting as a liaison between the Mayor and all divisions, bureaus, boards, commissions and authorities. The directors of all divisions report to the Chief Administrative Officer on administrative procedures.

The major administrative divisions of the City include: Engineering; Executive; Finance; Fire Services; General Services; Information Services; Housing and Community Development; Legal; Parks and Neighborhoods; Human Resources; Police Services; Public Works/Sanitation; and the Office of Planning and Development.

The Mayor is responsible for all city appointments to boards, which serve the City. These include the boards of the Memphis Light, Gas and Water Division (MLG&W); Memphis Area Transit Authority; Memphis Housing Authority; Memphis and Shelby County Downtown Memphis Development Commission; Memphis & Shelby County Convention Center Complex; Memphis Brooks Museum of Art; Memphis & Shelby County Building Code Advisory Board; and the Memphis & Shelby County Public Library Board. The Mayor appoints five of the seven members of the Board of the Memphis & Shelby County Airport Authority. Most of the members of these boards are private citizens giving their time to the City without compensation.

CITY OF MEMPHIS, TENNESSEE ORGANIZATION CHART

ORGANIZATION STRUCTURE BY FUNDS



The Mayor makes appointments to Boards and Authorities whose budgets are separate but are related organizations, jointly owned or joint ventures. These boards and authorities include, Memphis Area Transit Authority, Memphis & Shelby County Airport Authority, Industrial Development Board, and Memphis and Shelby County Downtown Memphis Development Commission.